

Blazing speed.
Spectacular images.
Rugged durability.

Consider barriers broken.

E-3



OLYMPUS

E-3

SPEED.

The world's fastest Auto Focus system when combined with Zuiko Digital Specific SWD 12-60 mm lens.

The E-3's AF system works in the blink of an eye to ensure you never miss a shot. When combined with the ZUIKO DIGITAL SWD ED 12-60 mm, the E-3's AF technology works at speeds unmatched by any other camera in the world. An 11-point full-twin cross AF sensor system produces tack sharp images. Dual sensing arrays on horizontal and vertical axes are arranged in a unique half pitch shifted pattern for ultimate precision. Critical auto focus functions are faster: processing speed, object capturing, and tracking performance. A dedicated data processing engine and a new AF algorithm rapidly handles sensor information. New pixel multiplication technologies gives the E-3 an AF luminescence range of -2 to 19 EV for better low light shooting

Enhanced SWD Technology. The ultra-fast auto focus speed of the E-3 is partly due to the sophisticated Supersonic Wave Drive motors in our new ZUIKO DIGITAL lenses. Combined with an ultra-compact encoder for detecting rotational movement with 5 µm precision, these lenses work smoothly, quietly and instantaneously.

Shutter speeds that truly let you capture it all. Imagine what you could shoot with a shutter speed of 1/8000 of a second and a X-sync speed of 1/250 second. Freeze action while photographing a cheetah in motion. Or clearly capture a 96 mph fastball as it connects with a bat. You can shoot at maximum aperture even in bright sunlight and take full advantage of the unmatched imaging power of ZUIKO DIGITAL lenses. A simplified mirror design gives the E-3 the fastest response time of any Olympus E-series camera.

Blazing shot-to-shot response. Shoot in high speed succession. The sequential 5 frames-per-second shooting comes from the rapid reading speed of the Live MOS Sensor coupled with a newly developed TruePic III image processor and the redesigned mirror.



IMAGE QUALITY.

Capture it all spectacularly.

The E-3 delivers sharp shots in low light or with a telephoto lens even without a tripod. A sophisticated image stabilization system compensates for camera shake by shifting the image sensor an equivalent of 5 shutter speed steps — all possible thanks to a gyro sensor that detects even the slightest hand tremble. An in-body image stabilization system gives you the freedom to use any Four Thirds lens. They are significantly smaller and lighter than other lenses because they don't need an image stabilization component in the optics.

10.1 megapixels of amazing clarity. Capture high-resolution images with rich tones and natural, true-to-life color. The E-3's 10.1 megapixel high-speed Live MOS sensor features excellent dynamic range, accurate color fidelity, and a new, advanced circuit to eliminate noise. The sensor's low power usage saves battery life.

True color thanks to TruePic III. The Live MOS sensor is complemented by the TruePic III Image Processor. It produces crystal clear photos using all the pixel information from each image to provide accurate, natural color, true-to-life flesh tones and precise tonal expression. TruePic III lowers the noise in images shot with ramped-up ISO settings resulting in blur-free photos in low light.

Great photos start with precision-crafted glass. You need high-quality lenses to achieve superior image quality. ZUIKO DIGITAL lenses are designed to work exclusively with digital cameras today and ready to work seamlessly with future high-performance image sensors. This large, award-winning family of lenses is perfectly matched to the E-3's image sensor so every pixel is properly exposed. The results? Photos with bright colors and incredible edge-to-edge sharpness that can't compare to shots taken with traditional film lenses.

VIEWING.

Shoot from unique angles for more creative control with Live View.

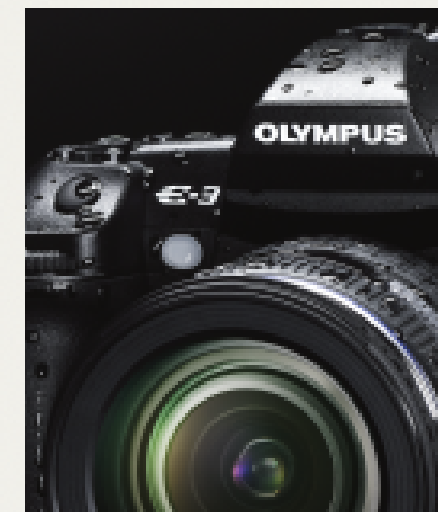
Olympus is the undisputed leader in Live View LCD technology. It lets you see your subject on a large, bright screen in real-time. The E-3 features an articulating, 2.5" Live View LCD screen that can be rotated up and down and from side to side. It covers all viewing angles so high and low angle shots are easy to compose and shoot. The LCD shows 100% field-of-view for accuracy. The Live View screen can also be used for AF shooting.

Make adjustments quickly. Instantly check the effects of white balance adjustment and exposure compensation in real time on the Live View LCD before shooting. You'll be able to monitor image quality more closely and exert greater creative control.

Magnify it. The E-3's Live View feature lets you magnify your subject right on the LCD by a factor of 5, 7 or 10 times for sharp, pinpoint focus — a great feature for macro shooting.

Choose your framing assist pattern. Three different framing assist patterns — a grid, golden section or a scale — can be displayed on the LCD without switching the actual physical focusing screen. You can even see an easy-to-read histogram that checks the exposure condition.

A bright viewing idea. A sensor on the LCD swivel detects your surroundings brightness. The screen will brighten or dim for optimum visibility and to reduce glare.



RELIABILITY.

All the technology to ensure reliable performance in the most demanding shooting conditions.

The E-3 is equipped with a large optical viewfinder that provides 100% accurate viewing and 1.15x magnification for reliable composition — what you see is exactly what you'll get. Even fine details are seen with astonishing clarity. The E-3's large, precision-crafted pentaprism is made from high refractive index glass with a highly reflective silver coating. The eyepiece uses glass lenses. All the lenses are surface coated to maintain brightness. The focusing screen features a Neo Lumi-Micro Mat for bright, easy-to-adjust manual focusing.

Keeping the dust out. Spots on photos are now banished forever. The Olympus dust reduction system is an industry first and a proven technology. Every time you turn on the E-3, our Supersonic Wave Filter™ — located between the shutter and the image sensor — silently vibrates an amazing 30,000 times per second. Dust is blasted away. The dust reduction system even removes dust attached by intermolecular force that can't be shaken off or discharged with static electricity. Dust will no longer get between you and a great shot.

One tough, hard body. Shoot anywhere, anytime, in any condition. The E-3 body — even the built-in flash and LCD — is splash and dust-proof. Constructed from a magnesium-alloy with a homogeneous composition, the E-3 is lightweight yet strong and rugged. The same goes for ZUIKO DIGITAL lenses. You'll find splash and dust-proof models that are as tightly sealed as the camera.



Product Type	Single-lens reflex Live View digital camera with interchangeable lens system
Memory	CompactFlash Type I/II, Microdrive, xD-Picture Card (Dual-Slot)
Screen size	17.3mm(H) x 13.0mm(V) / .68 in.(H) x .512 in.(V)
Lens mount	Four Thirds Mount
Effective Pixels Number	10.1 megapixels
Image Pickup Unit	
Product type	Live MOS Sensor
Total no. of pixels	Approx. 11,800,000 pixels
Aspect ratio	1.33 (4:3)
Dust reduction system	Supersonic Wave Filter (dust reduction system for image sensor)
Recording	
Recording format	DCF, DPOF compatible/Exit, PRINT Image Matching III
File format	RAW (12-bit lossless compression), JPEG, RAW+JPEG
Recording image size	[RAW] 3648 x 2736 pixels, [JPEG] 3648 x 2736 pixels - 640 x 480 pixels
Viewfinder	
Product type	Eye-level single-lens reflex viewfinder
Field of view	Approx. 100%
Viewfinder magnification	Approx. 1.15x (-1m-1, 50mm lens, infinity)
Eye point	Approx. xx mm (-1m-1)
Diopter adjustment range	-3.0 - +1m-1
Focusing screen	Neo Lumi-Micro Mat screen supplied, can be changed to grid mat type at a service center.
Eye-piece shutter	Built-in type
Live View	
Display	Live MOS Sensor, 100% field of view, Exposure compensation preview, White balance adjustment preview, Gradation auto preview, MF/S-AF possible, 5x/7x/10x magnification possible. Grid line, AF Frame, AF Point, Shooting information, Histogram
Preview	
Preview Function	Can be checked (when Fn button is set in preview mode.)
Image Stabilization	
System	Built in (Imager shift image stabilizer)
Mode	2 modes (I.S. 1, I.S. 2)
Effective compensation range	Max. 5 EV steps (depends on the lens type and shooting conditions)
Monitor	
Product type	HyperCrystal LCD (semi-transmissive TFT color LCD)
Size	2.5 inches
Total no. of pixels	Approx. 230,000 pixels
Playback field of view	100%
Focusing	
AF system	TTL phase-difference detection system
Focus mode	Single AF (S-AF) / Continuous AF (C-AF) / Manual Focus (MF) / S-AF + MF / C-AF + M
Focusing point	11-cross points multiple AF
Focusing point selection	Single point, Group area, All points
AF luminance range	EV -2 - 19 (at 20, ISO 100)
AF illuminator	Built-in flash (flash-off mode and external flash available)
AF lock	Locked at first position of Shutter button in Single AF mode / AFL button (customizable) (AF lock available with AFL button on Live View)
Focus tracking	Interlocked with Continuous AF mode
Focus aid	Available
Exposure Control	
Metering system	(TTL open-aperture metering system) (1) Digital ESP metering (49-points multi pattern metering) (2) Center weighted average metering (3) Spot metering (4) Spot with Highlight control (5) Spot with Shadow control
Metering range	EV 1 - 20 (At normal temperature, 50mm f2, ISO 100)
Exposure mode	(1) P: Program AE (Program shift can be performed) (2) A: Aperture priority AE (3) S: Shutter priority AE (4) M: Manual
Underwater program	Underwater program AE can be set to Fn button
ISO sensitivity	AUTO (ISO 100 - 3200) / Manual (ISO 100 - 3200), 1/3 or 1 EV steps
Exposure compensation	±5 EV (selectable in 1/3, 1/2, 1 EV steps)
AE lock	AEL button (customizable)
Exposure bracketing	3 or 5 frames in 0.3, 0.7, 1EV steps selectable
ISO bracketing	3 frames in 0.3, 0.7, 1EV steps selectable
White Balance	
White Balance Mode	Auto, Preset, One-Touch, Custom
Preset white balance	8 settings (3000K - 7500K)
One-touch white balance	4 settings can be registered
Custom white balance	1 setting can be registered at Kelvin temperature (2,000K - 14,000K)
White balance compensation	±7 steps in each R-B / G-Maxis (in Auto/Preset/One-touch WB mode)
White balance bracketing	3 frames in 2, 4, 6 steps selectable in each R-G/G-M axis.

Color Mode	
Color matrix	sRGB, Adobe RGB
Picture Mode	
Mode	Vivid, Natural, Portrait, Muted, Monotone, Custom (default setting: Natural (Basic 5 modes and adjustment options are available in custom mode)
Adjustment parameter	Contrast, Sharpness and Saturation level available in 5 steps for Vivid, Natural, Portrait and Muted, Contrast and Sharpness level available in 5 steps for Monotone. In custom mode, gradation level available in 4 steps for Custom.
Filter effect	Yellow, Orange, Red or Green filter available for Monotone
Picture tone	Sepia, Blue, Purple or Green tone available for Monotone
Gradation	3 levels (Auto, High key, Normal, Low key) available
Shutter	
Product type	Computerized focal-plane shutter
Shutter speed	P(Ps), S, A, M mode (60 - 1/8000 sec.) Bulb 1/3, 1/2, or 1EV steps selectable.
Self-timer	Operation time: 12 sec., 2 sec. (cancel available)
Remote cable release	Available with optional RM-CB1 Remote Cable
Optical remote control	Available with optional RM-1 Remote Control (bulb control also available)
Anti shock mode	Available (selectable 1 to 30 sec.)
Drive	
Drive mode	Single-frame shooting, Sequential shooting H, Sequential shooting L, Self-timer, Remote control
Integrated Flash	
Built-in flash	Retractable flash, GN=13 (ISO 100)
Flash control mode	TTL Auto (TTL pre-flash mode), Auto, Manual
Flash mode	Auto, Red-eye reduction, Red-eye reduction slow sync., (1st curtain), Slow sync. (2nd curtain) Manual (1/4, 1/16, 1/64), Off
Synchronization speed	1/250 sec. or less, Super FP up to 1/8000 sec.
Flash intensity control	Up to ±3 EV in 1/3 EV steps
Flash bracketing	3 frames in 0.3, 0.7, 1 EV steps selectable
Wireless flash control	
Compatible external flash	FL-50R, FL-36R
Control method	Triggered and controlled by built-in flash light
Flash control mode	TTL Auto (TTL pre-flash mode), Auto, Manual, FP TTL Auto, FP Manual.
Number of channels	4 channels
Group setting	3 groups
Playback	
Playback modes	Single-frame, Index (4/9/16/25 frames), Calendar, Close-up (2-14X), Slideshow, Picture rotation (auto mode available), Light box
Information display	Histogram (independent luminance / RGB available), Highlight / Shadow point warning, AF frame, Shooting information, Off
Menu	
Languages	English, Korean, Simplified Chinese, Traditional Chinese (Another language can be added)
Custom Setting	
My mode	2 settings can be registered
Erasing	
Erasing function	Single frame, All frames, Selected frames
Copy	
Copy between media	Single frame, All frames, Selected frames
Editing	
RAW picture editing	RAW development
JPEG editing	Resize (producing another file), Gradation auto
Print	
Print function	Print reservation (DPOF), Direct print (PictBridge compatible)
Input/Output	
PC interface	USB 2.0 High Speed for storage and camera control (MTP mode is available)
Video connector	Video out (NTSC/PAL selectable)
Flash attachment	Hot shoe
Power	DC-input Yes (AC-1 compatible)
Power Requirements	
Battery	BLM-1 Li-ion battery (included) or CR123 x 3 with LBH-1
Sleep mode	Available (1, 3, 5, 10 min., off selectable)
No. of recordable pictures	Approx. 600 shots (optical viewfinder) (with BLM-1 under CIPA testing standard)
Power battery holder	HLD-4 compatible
Dimensions/Weight	
Dimensions	142mm(W) x 116mm(H) x 74.5mm(D) / 5.9 in.(W) x 4.56 in.(H) x 2.9 in.(D) (excluding protrusions)
Weight	810 g (body only)
Operating Environment	
Temperature	0-40°C/32-104°F (operation) / 20-60°C/68-140°F (storage)
Humidity	30-90% (operation) / 10-90% (storage)
Dust/Splash Proof	Yes

LENSES, FLASHES AND ACCESSORIES. Choose from these new accessories or from the full line of Olympus E-System products, including over 20 100% Zuiko™ digital lenses .



24-120mm [35mm camera equivalent]
ZUIKO DIGITAL ED 12-60mm f2.8-4.0 SWD



28-70mm [35mm camera equivalent]
ZUIKO DIGITAL ED 14-35mm f2.0 SWD



100-400mm [35mm camera equivalent]
ZUIKO DIGITAL ED 50-200mm f2.8-3.5 SWD



FL-50R
Electronic Flash



FL-36R
Electronic Flash

